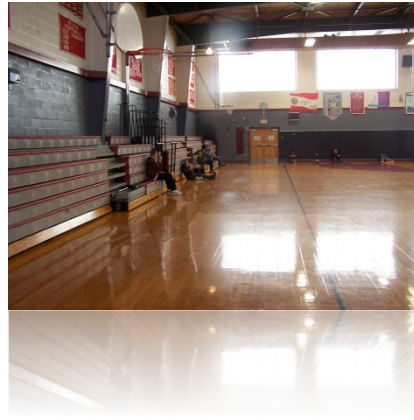


Millis Public Schools



February 25, 2014

Master Plan & Building Facilities Study

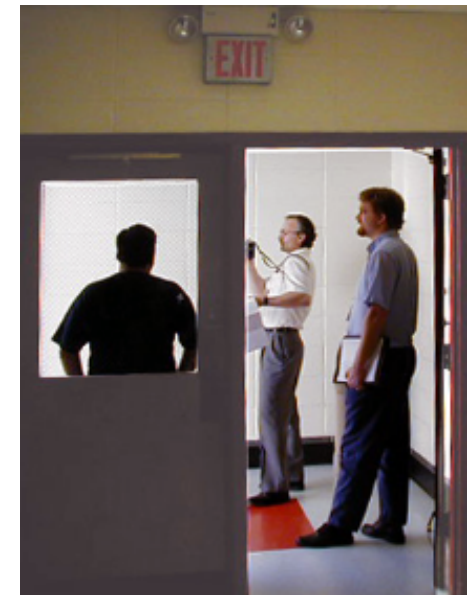
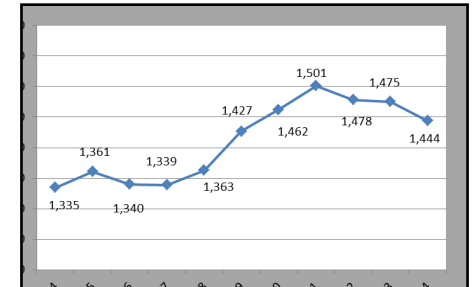


Millis Public Schools
Millis, Massachusetts



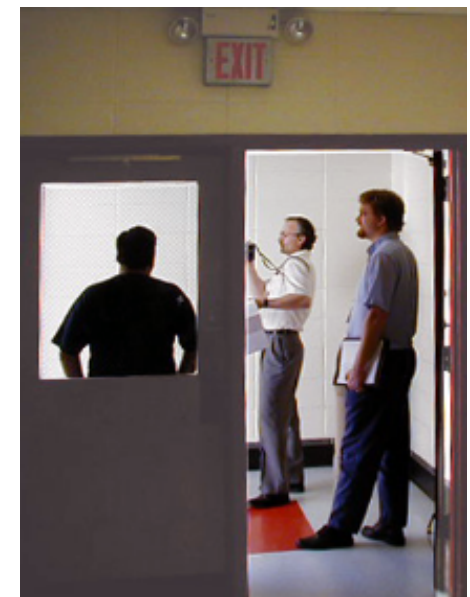
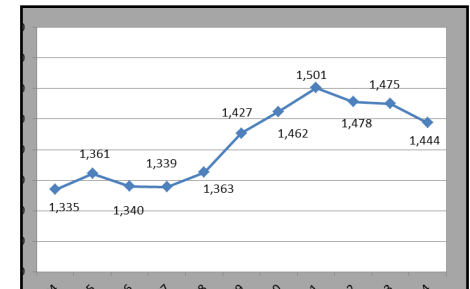
Master Plan & Factices Evaluation

1. Overview of Study
2. Findings
3. Recommendations
4. Next Steps...



Agenda for Tonight

1. Enrollment Projections
2. Online Survey
3. Facilities Evaluation
4. Master Planning



Enrollment Projection Method

Cohort survival coefficient 5 & 10 year

Factored birth rates, housing starts

Considered local/regional population trends

Hybrid projection model (MSBA)



Projected Population Changes

GAF site – no final use plans determined

Lack of prime residential developable land

Stable town population 2000-2010 – getting older

Declining number of younger children 0-5



Historical View of Enrollment

Largest enrollment: 1,501 (2010-11)

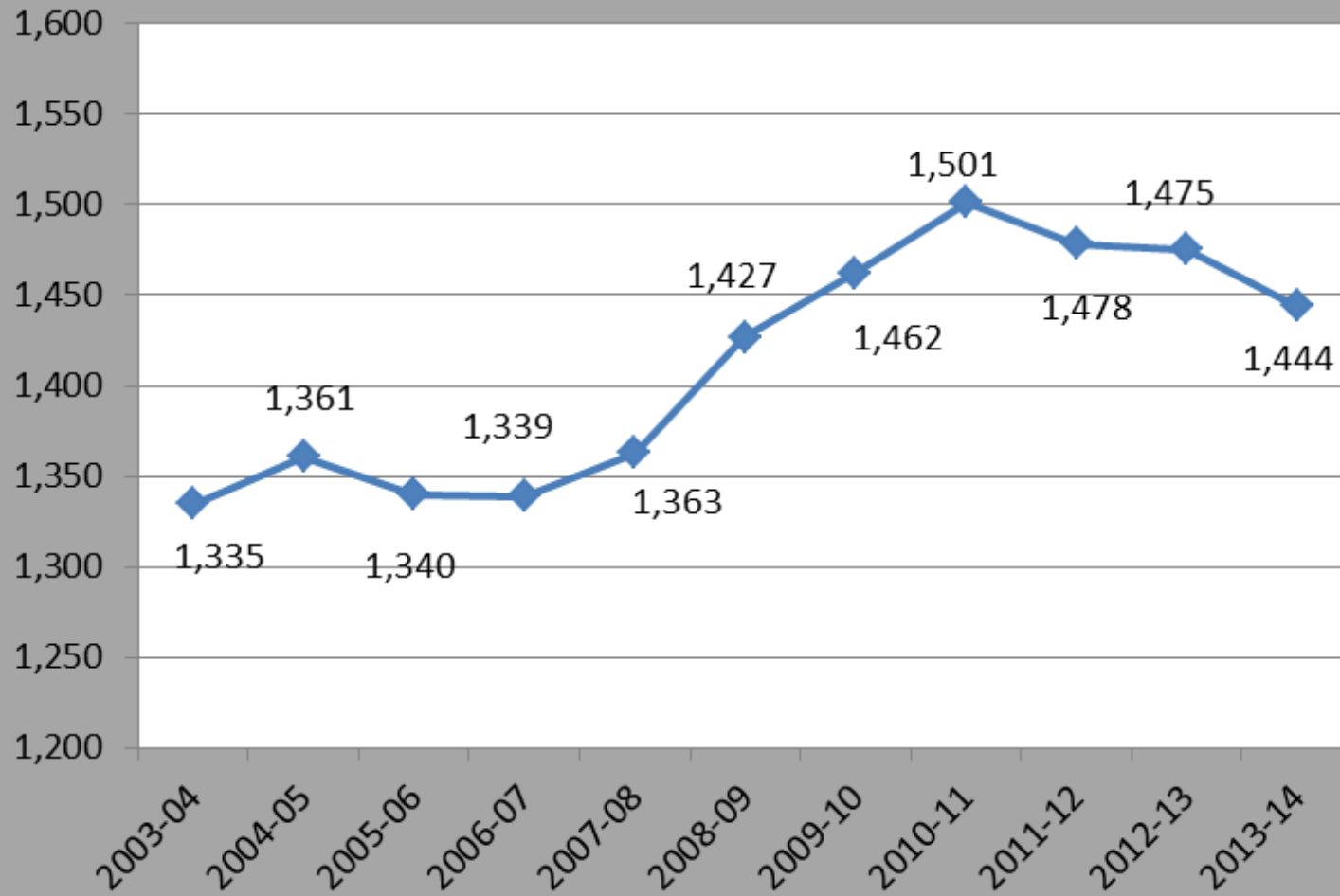
Smallest: 1,335 (2003-04)

Average over past 11 years (1,401)

Largest incoming Kindergarten: 123 ('08-09)



School Enrollment Historical



Millis Public Schools
Millis, Massachusetts



Effect on Incoming Kindergarten

Smaller Incoming Kindergarten classes

Compresses all grade levels over time

Greater move to full-day K (3:1)

Requires 1-2 added classrooms annually

Has stressed Clyde Brown's space



Long Term Projections

Slight enrollment decrease (2014-2024)

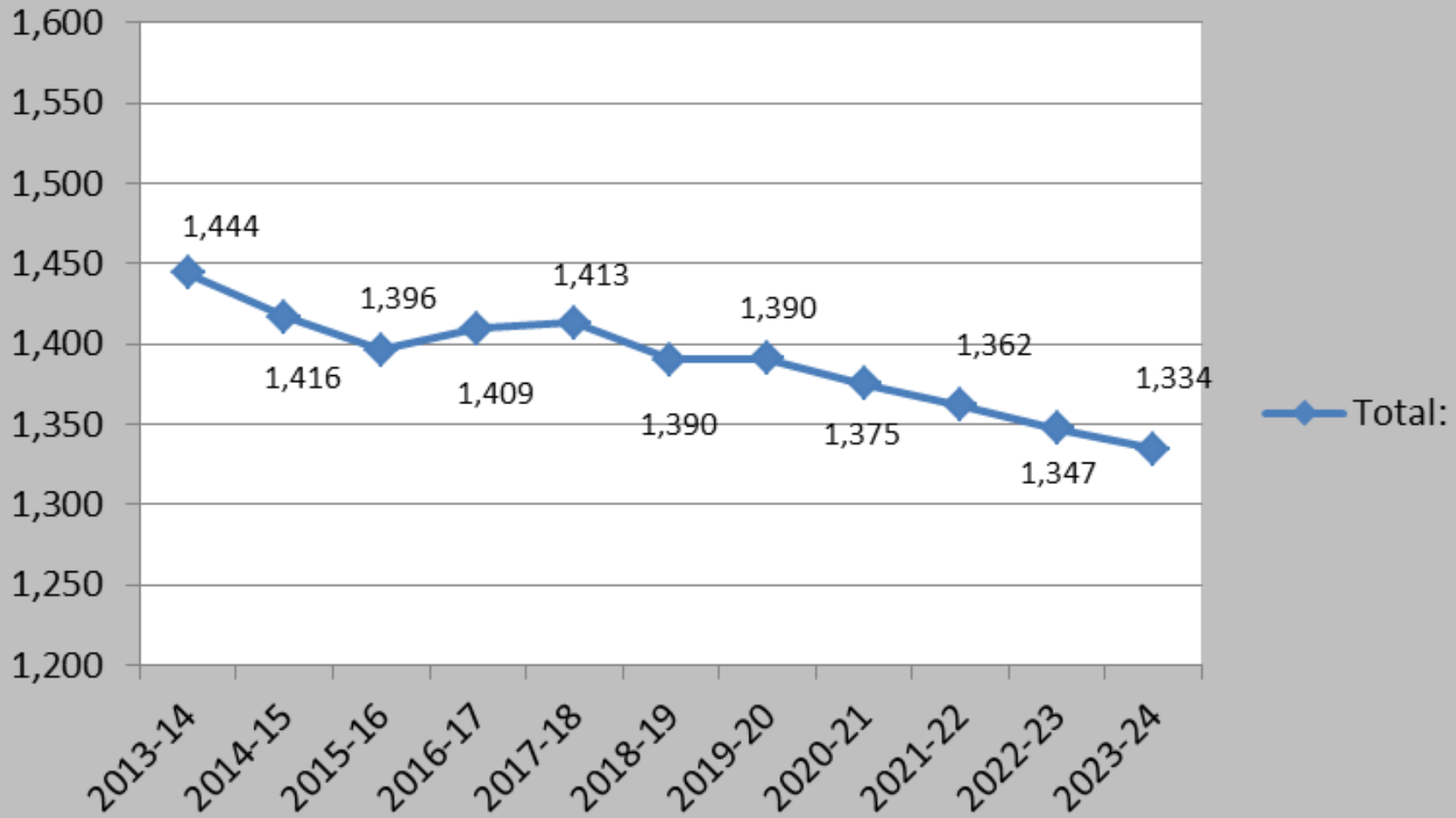
5 year model – 4.2% average 5yr reduction

10 year model – 3.8% average 5yr reduction

The “bubble” ('08-09 K) is now in Grades 4/5



Total 5 Year Cohort Survival Projection

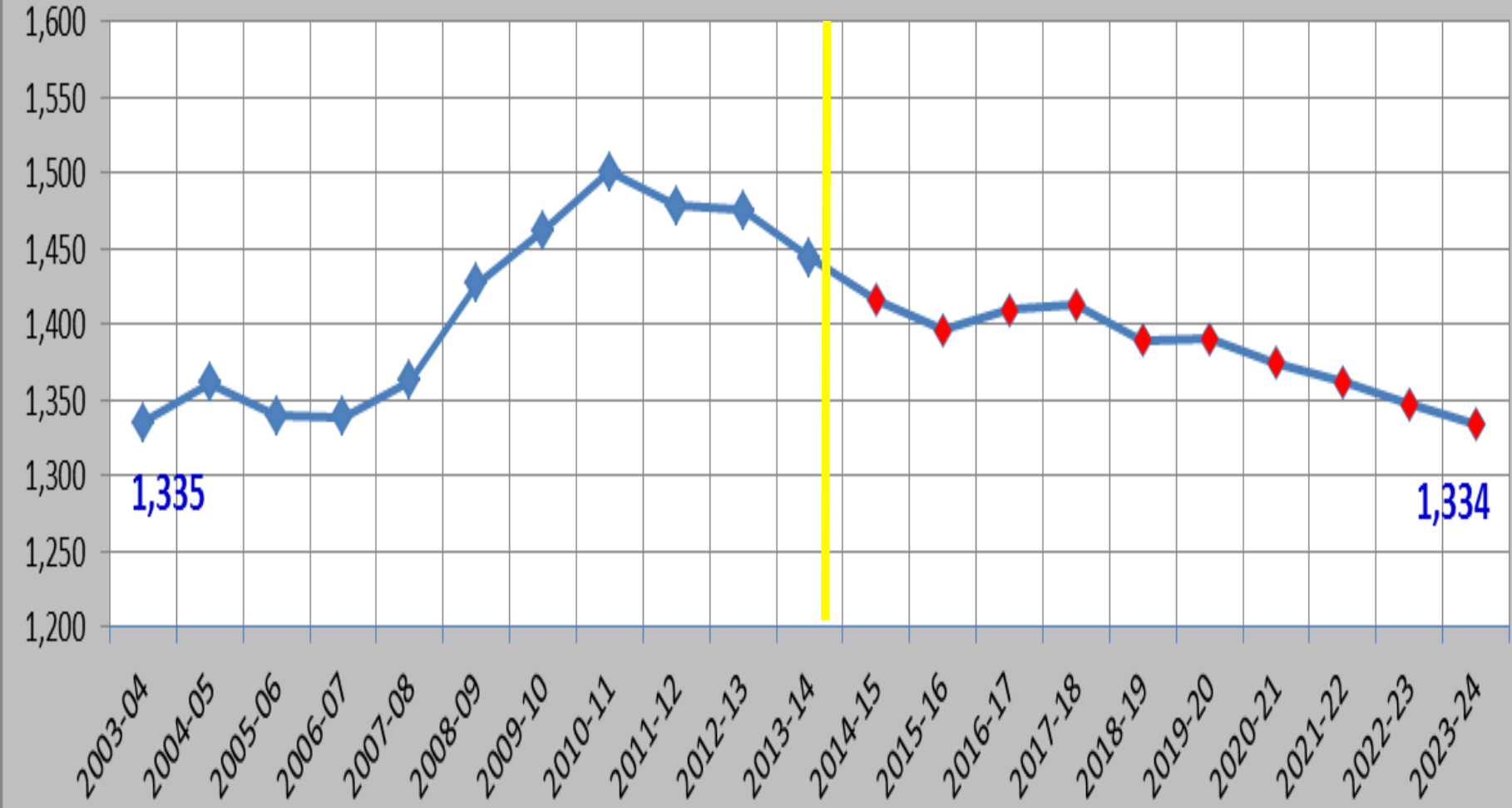


Projection Summary

There is no long term anticipated increase in student enrollment that would significantly stress the size of each school and the number of available rooms compared to current conditions.



Historical & Projected - 20 Years



Millis Public Schools
Millis, Massachusetts



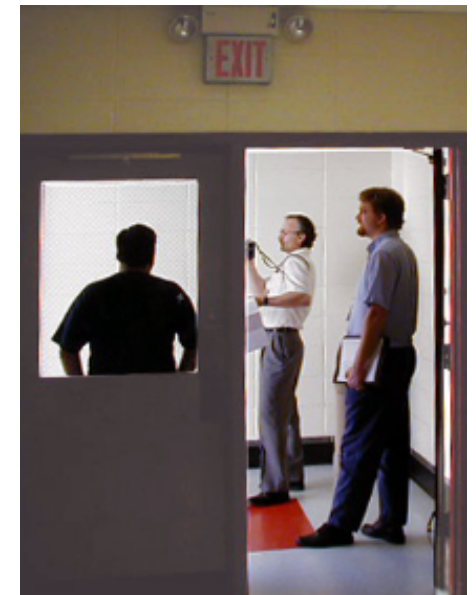
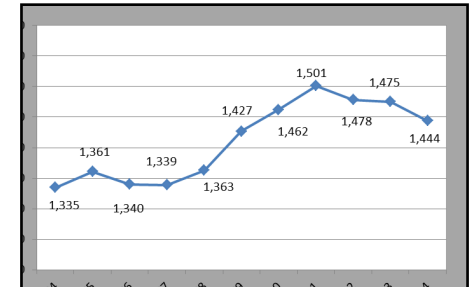
Agenda

1. Enrollment Projections

2. **Online Survey**

3. Facilities Evaluation

4. Master Planning



Millis Public Schools
Millis, Massachusetts



Summary Analysis of Survey

Survey on district web site (Oct-Nov, 2013)

Open to everyone

187 respondents

Input on facility needs



Millis Public Schools
Millis, Massachusetts



Survey Respondents

Answer Choices	Responses	
Grade K-8 Student	16.0%	30
Grade 9-12 Student	2.1%	4
Current School Parent	55.6%	104
Community Member	1.1%	2
Grade K-8 Teacher	12.3%	23
Grade 9-12 Teacher	4.3%	8
District Staff (other than teacher)	7.0%	13
Other	1.6%	3
Total		187



The 5th Grade Location

Challenges

- Lack of space at Clyde Brown
- Lack of learning resources for fifth graders (tech, unified arts)

Benefits

- More developmentally appropriate
- Separating 5th graders from older students



Students with Disabilities Needs

At Clyde Brown

- Lack of space for therapy services, test accommodation (using closets, music, etc.)

Middle/High School

- Need for smaller spaces, therapy services...
- Need for space impacting all programs
- Need parent parking for meetings



Libraries

Clyde Brown

- Lack of technology & automation
- Need small spaces & conference room

Middle/High School

- Lack dedicated library classroom
- Small spaces for student group work/study



Technology & Hands On Learning

All Schools

Updates computers & hanging projectors

Robust wireless, tablets for each child

Smart boards, easy hook-up

Audio & teleconferencing accessibility

Working telephones in each room



Millis Public Schools
Millis, Massachusetts



School/Occupant Security

All Schools

- Need to wear ID badges, and not prop open doors

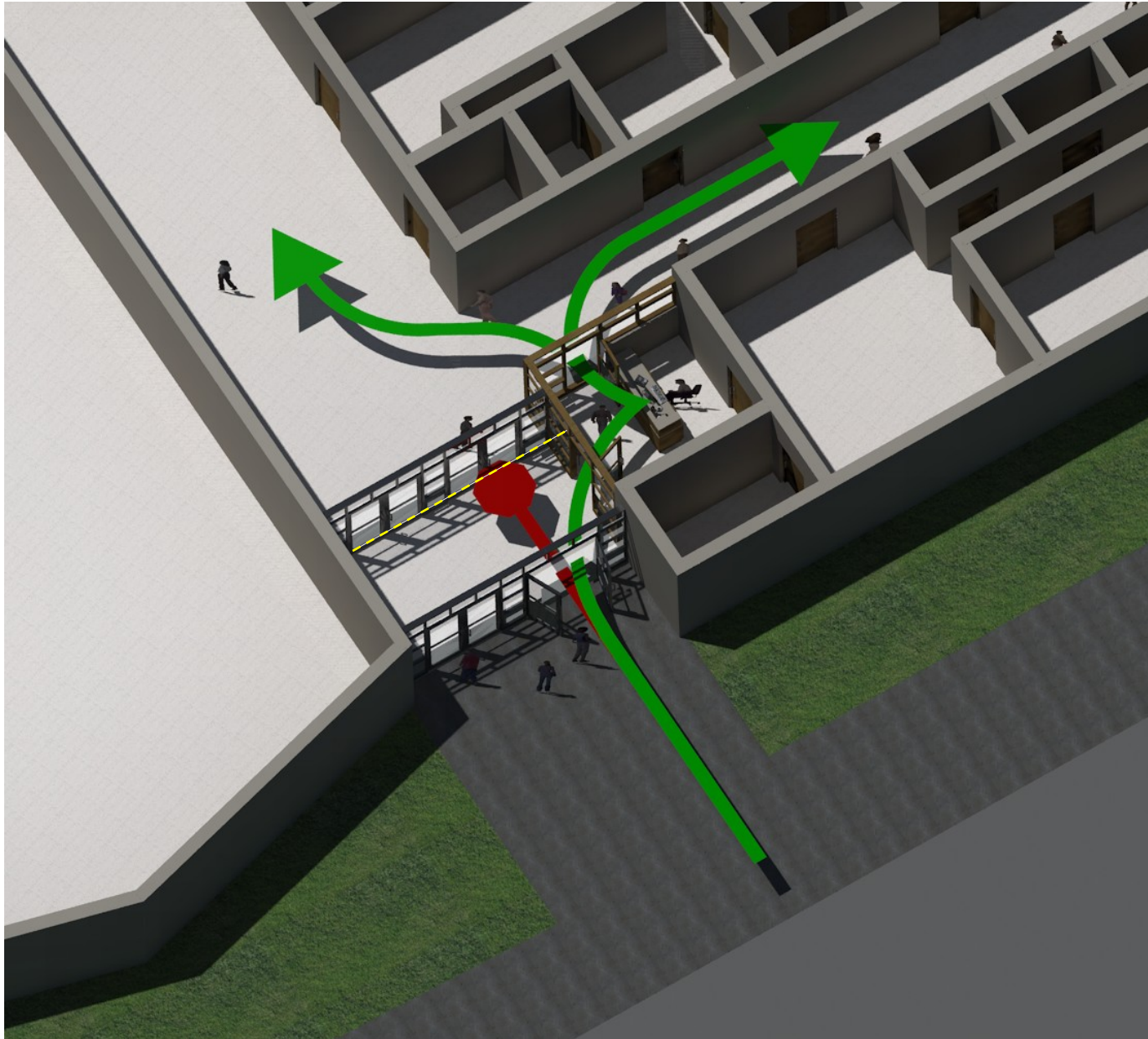
Clyde Brown

- Dismissal/drop off locations & traffic issues
- Buzz-in system – need second vestibule

Middle/High School

- Buzz-in system – need second vestibule
- Can't lock interconnecting classroom doors





Millis Public Schools
Millis, Massachusetts



Art & Music

Clyde Brown

- Lack of space for both (use cafeteria often)
- Lack of practice space

Middle/High School

- Lack of space for both
- Band/music in old wood shop area
- Auditorium needs new sound/lighting



Physical Education/Athletics

Clyde Brown

- Lack of access to Town fields limits PE program

Middle/High School

- Lack of quality fields
- Need updated track and main field
- Location/condition of weight room
- More gym space



Facilities Limiting Teaching & Learning

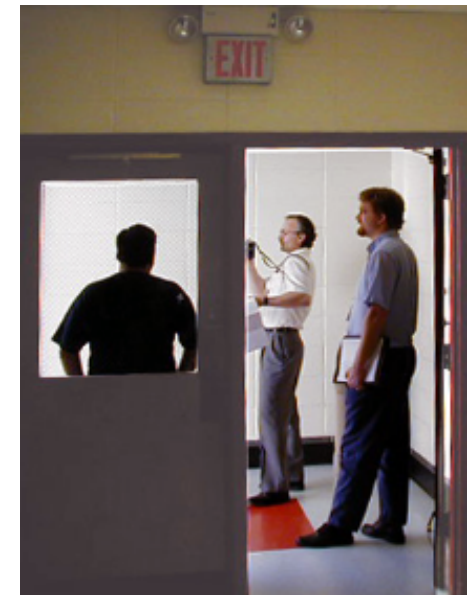
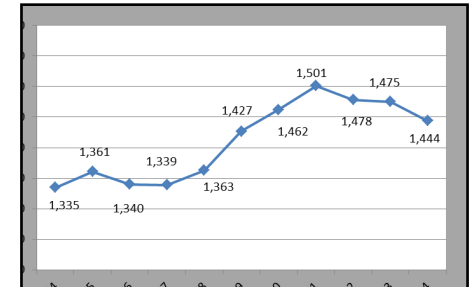
All Schools

- Lack of classrooms = many carts → limits opportunities
- Educational Technology Upgrades
- Athletic fields need to be upgraded
- Lack of quiet/study spaces in Library
- Size of cafeterias – long lunch schedules



Agenda for Tonight

1. Enrollment Projections
2. Online Survey
- 3. Facilities Evaluation**
4. Master Planning



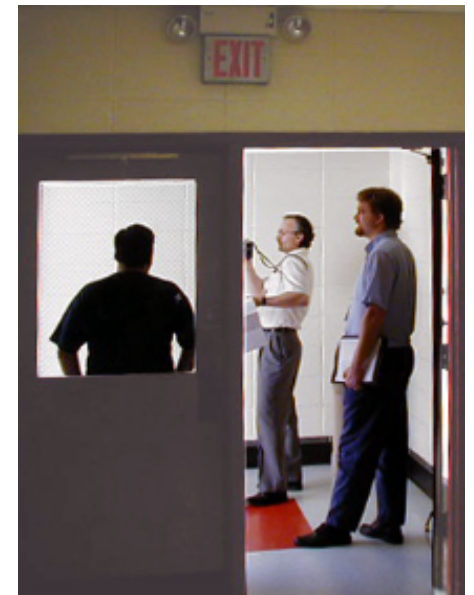
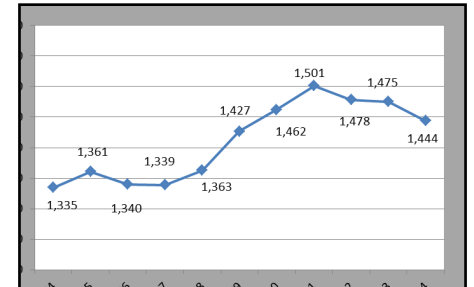
Building Facilities Study

- Team Approach
- Facilities Evaluation Document
 - Scope Items
 - Priorities
 - Construction Budget/Escalation
 - Total Project Costs - Incidentals, Contingency...
 - Interactive Tool
- Long Range Planning



Agenda

1. Enrollment Projections
2. Online Survey
3. Facilities Evaluation
- 4. Master Planning**

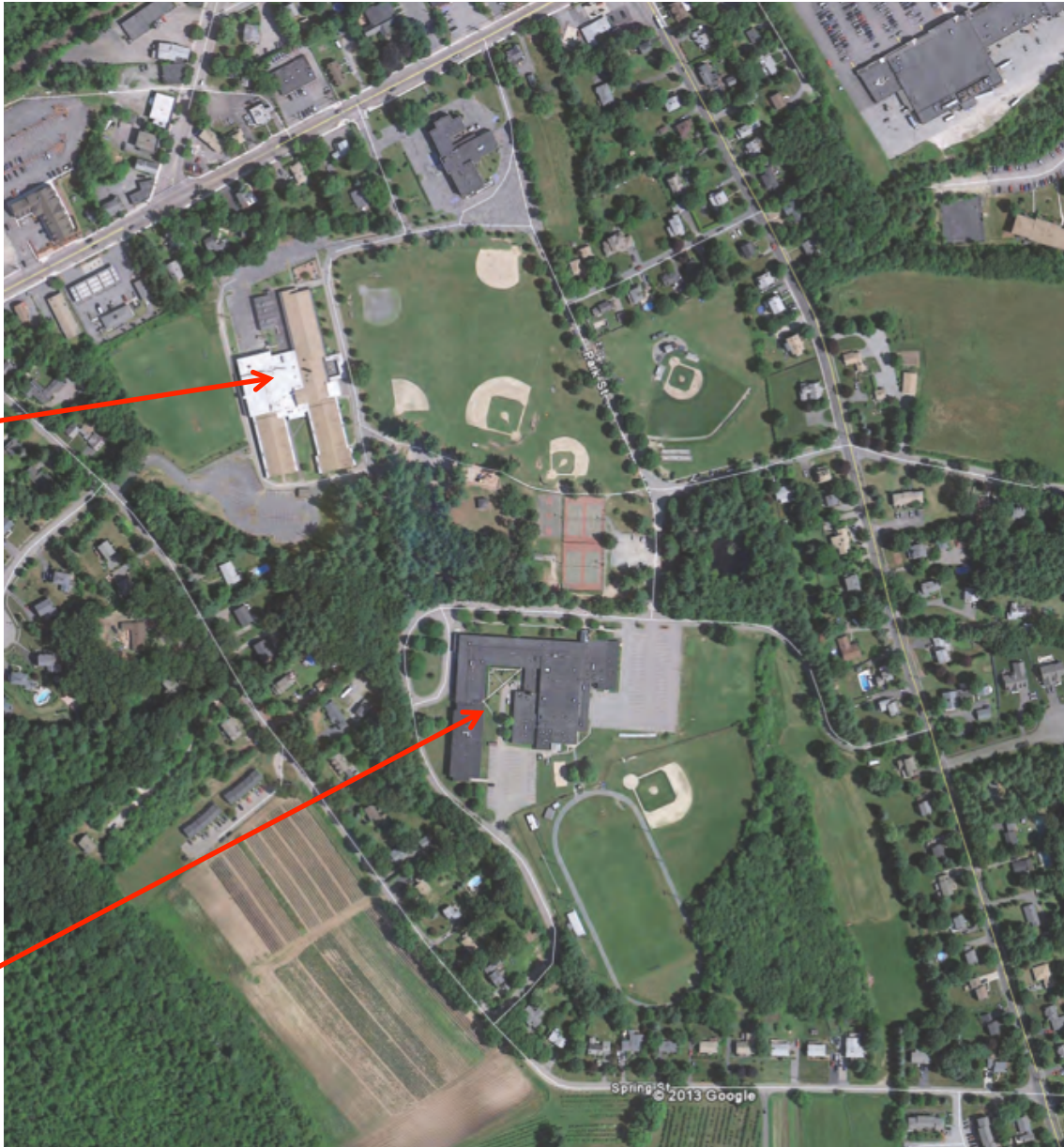




**Clyde Brown
Elementary School**



**Millis Middle/High
School**



Millis Public Schools
Millis, Massachusetts



Clyde Brown - EXISTING

3-4

1-2

PreK-K

EXISTING FIRST FLOOR PLAN



Millis Public Schools
Millis, Massachusetts



Clyde Brown Elementary

- At Classroom Capacity, but...
- 5th Grade - RECOMMENDATION
- Still look at School Expansion for:
 - Special Education Space
 - Dedicated Music Room
 - Enlarge Cafeteria
 - Reconfigure “Core” to connect classroom wings



CLYDE BROWN ELEMENTARY SCHOOL

1 Story Classroom Addition



Special Ed. or Classrooms

Rebuild as 1 or 2 Story Classroom Addition

LEGEND



Additions



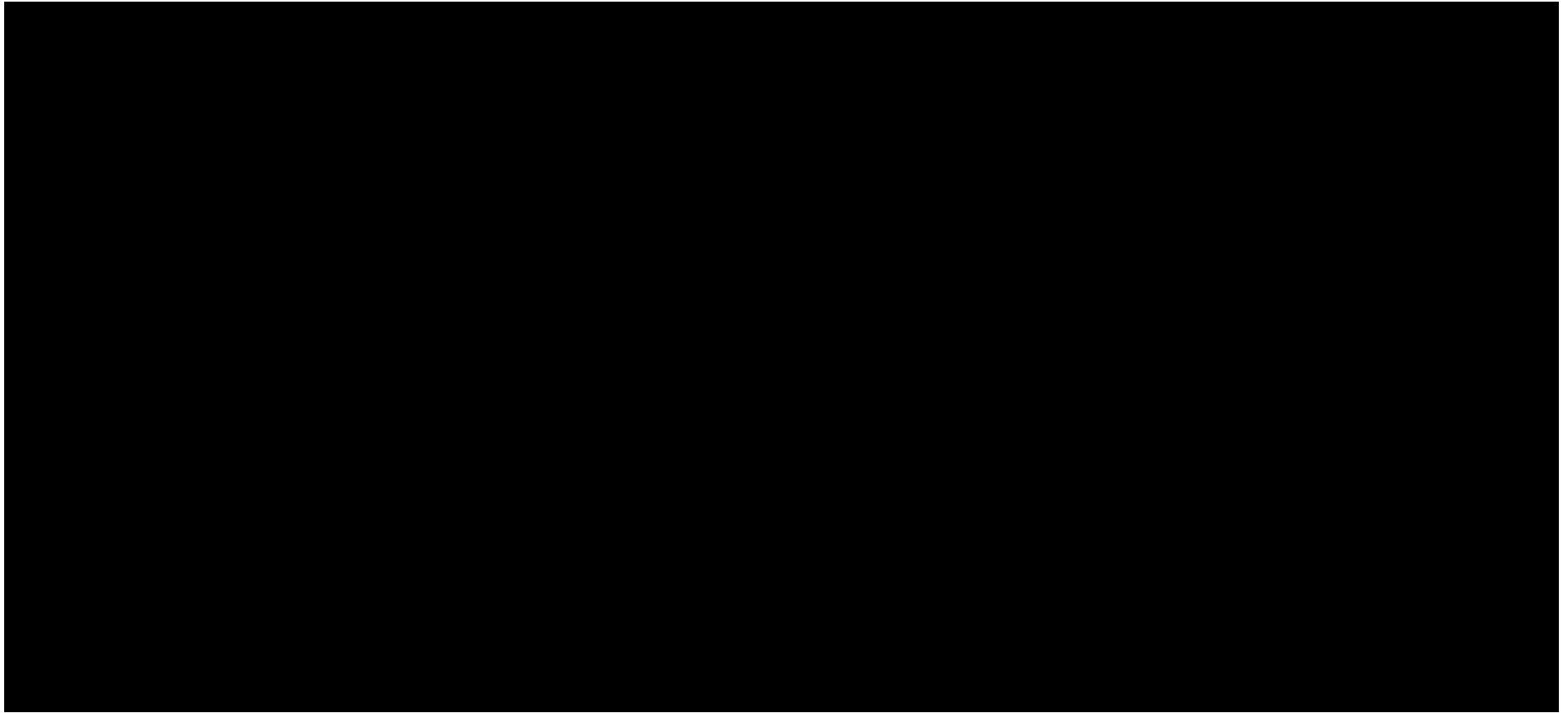
TETRA TECH
ARCHITECTS & ENGINEERS

Clyde Brown Elementary

- Accelerated Scope Items
 - Roof
 - Boilers
 - MSBA Accelerated Repair Program
 - Media Center Reconfiguration
- Decline in student population occurs at Clyde Brown first



Middle/High School - EXISTING



EXISTING FIRST FLOOR PLAN

EXISTING SECOND FLOOR PLAN

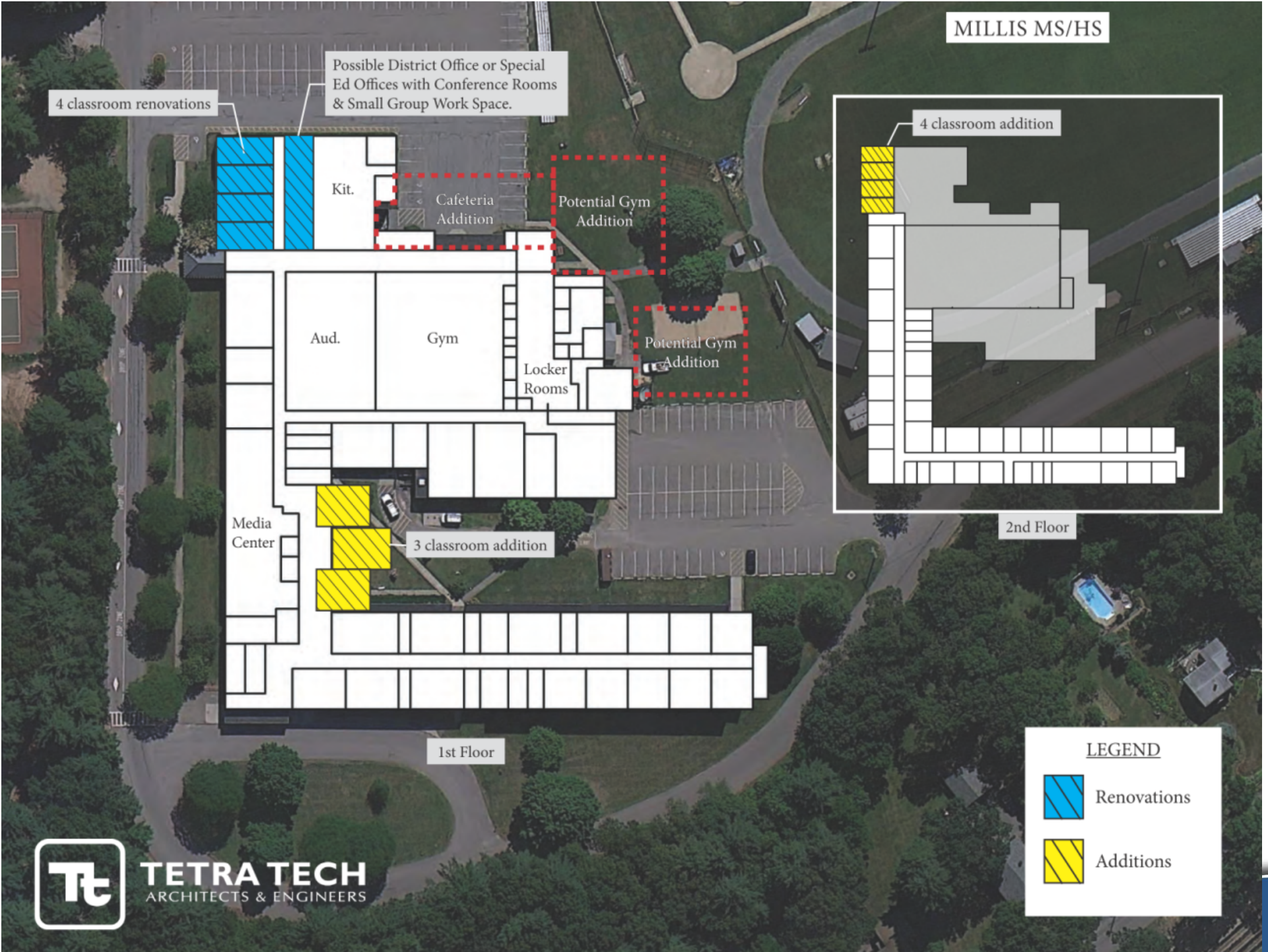


Middle/High School

- Far Over Capacity
- Need for Additional Classrooms
- Approaches to School Expansion
 - Modular Classrooms
 - Location(s) of Additions
- MSBA Capital Project Funding



MILLIS MS/HS



NEXT STEPS

- Continue making the best of what you have
- MSBA SOI – Core Program
 - Expand Middle/High School
 - Due - April 11, 2014
- MSBA SOI – Accelerated Repair Program
 - Clyde Brown Elementary – Roofs and Boilers
 - 2015 Funding Cycle





**Clyde Brown
Elementary School**



**Millis Middle/High
School**



Millis Public Schools
Millis, Massachusetts

